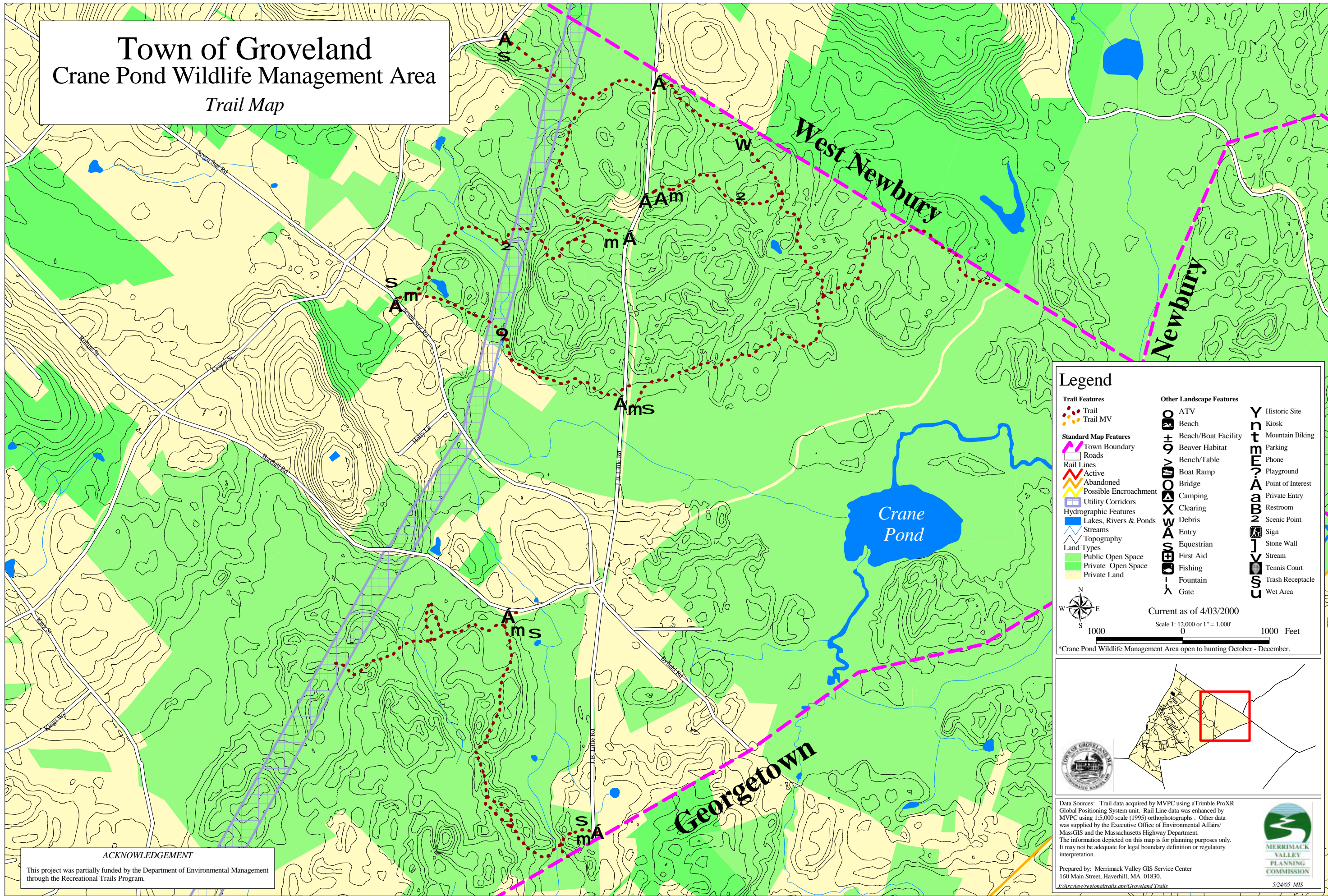


Town of Groveland Crane Pond Wildlife Management Area Trail Map

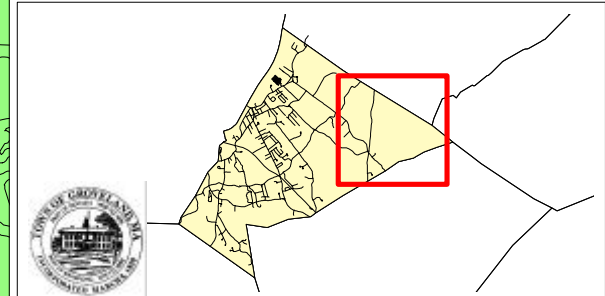


Legend

Trail Features	Other Landscape Features	Historic Site
Trail	ATV	Y
Trail MV	Beach	Historic Site
Standard Map Features	Beach/Boat Facility	Kiosk
Town Boundary	Beaver Habitat	Mountain Biking
Roads	Bench/Table	Parking
Rail Lines	Boat Ramp	Phone
Active	Bridge	Playground
Abandoned	Camping	Point of Interest
Possible Encroachment	Clearing	Private Entry
Utility Corridors	Debris	Restroom
Hydrographic Features	Entry	Scenic Point
Lakes, Rivers & Ponds	Equestrian	Sign
Streams	First Aid	Stone Wall
Topography	Fishing	Stream
Land Types	Fountain	Tennis Court
Public Open Space	Gate	Trash Receptacle
Private Open Space		Wet Area
Private Land		

Current as of 4/03/2000
 Scale 1: 12,000 or 1" = 1,000'
 0 1000 Feet

*Crane Pond Wildlife Management Area open to hunting October - December.



Data Sources: Trail data acquired by MVPC using a Trimble ProXR Global Positioning System unit. Rail Line data was enhanced by MVPC using 1:5,000 scale (1995) orthophotographs. Other data was supplied by the Executive Office of Environmental Affairs/MassGIS and the Massachusetts Highway Department. The information depicted on this map is for planning purposes only. It may not be adequate for legal boundary definition or regulatory interpretation.

Prepared by: Merrimack Valley GIS Service Center
160 Main Street, Haverhill, MA 01830.
L:\Arcview\regionaltrails.apr\Groveland Trails

5/24/05 MIS

ACKNOWLEDGEMENT
This project was partially funded by the Department of Environmental Management through the Recreational Trails Program.